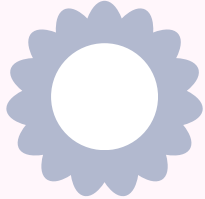


GRAPEVINE-COLLEYVILLE ISD

2024-2025 WELLNESS BENEFITS



Maximize your insurance benefits by utilizing your policies!

Access Claim Forms and Plan details at:
www.gcisdbenefits.com



Supplemental Wellness Programs

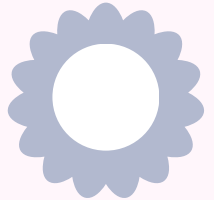
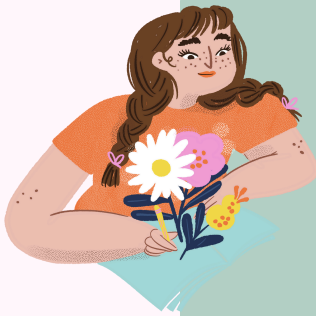
Employees enrolled in the **Cancer** or **Accident** plans should file for their wellness benefits after completing an annual preventative service.

Wellness benefit per plan:

- CHUBB Cancer Plan = \$50 1/pp/pcy
- The Hartford Accident Plan = \$50 1/pp/pcy

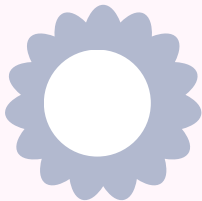
Link to Cancer Wellness Form [CHUBB Wellness](#)
Policy Number: 1000000198

Link to the Accident Wellness Form [The Hartford Wellnees](#)
Policy Number: 395308



Employee Assistance Program

24/7, confidential assistance for you and your family provided for FREE by GCISD. Online, Phone or Face to Face counseling (6/pp/yr). Call **888-993-7650** or access online at: allonehealth.com/deeroaks
Company Code: gvinecolley



FREE Telehealth Options

Medical Telehealth **\$0** copays are available to employees and enrolled family through RECURRO.
855-673-2876 or www.recurohealth.com

